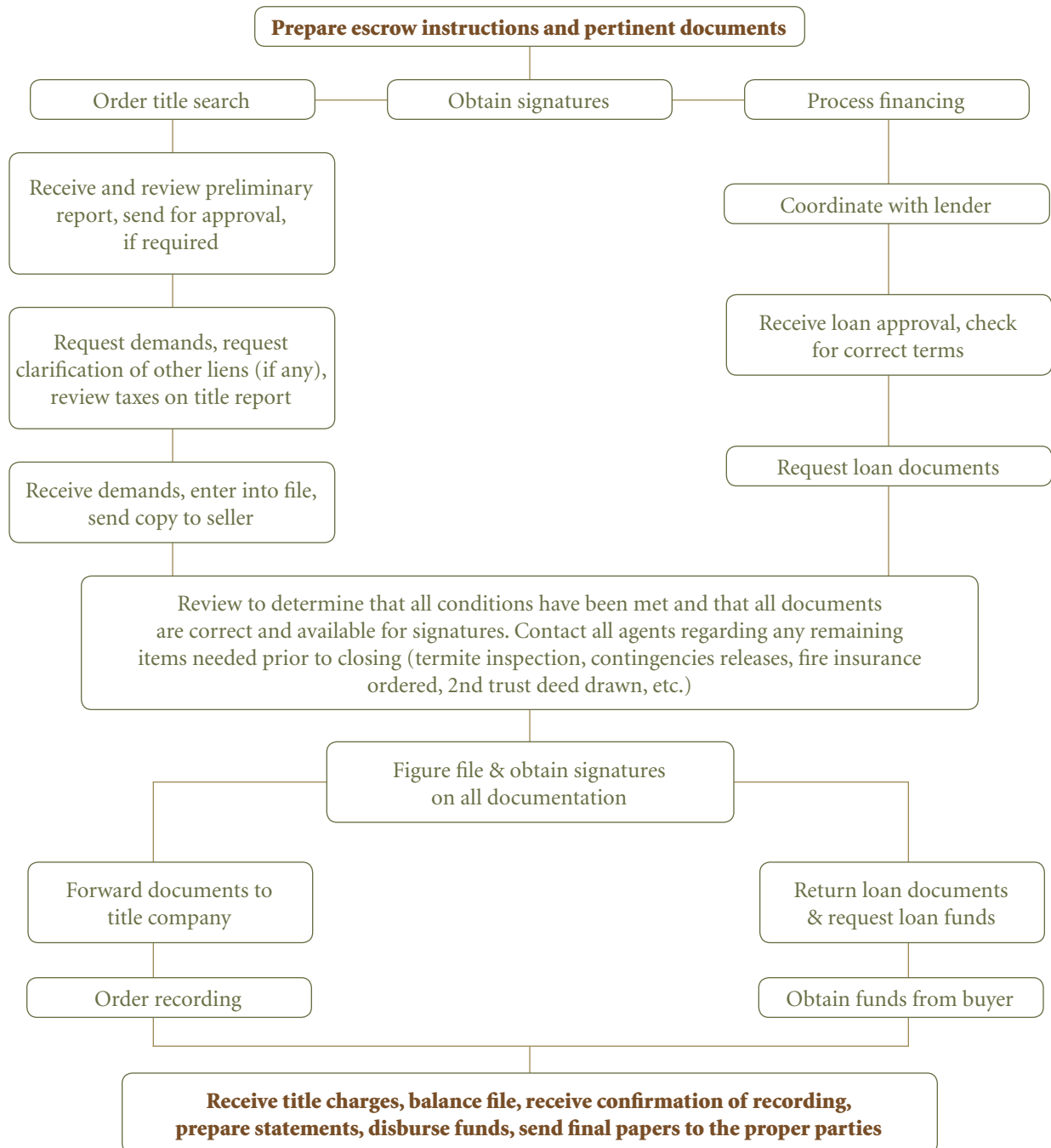


THE ESCROW PROCESS DETAILED

TERRA COASTAL
— ESCROW, INC. —



Part of the TRG Family of Companies

Rev 08/2014

This material is not intended to be relied upon as a statement of the law, and is not to be construed as legal, tax or investment advice. You are encouraged to consult your legal, tax or investment professional for specific advice. The material is meant for general illustration and/or informational purposes only. Although the information has been gathered from sources believed to be reliable, no representation is made as to its accuracy.